



COMMERCIAL SOUND SYSTEMS



Step Up To Electro-Voice®

Product Index Located Inside Back Cover

COMMERCIAL SOUND SYSTEM SOLUTIONS FROM ELECTRO-VOICE®

From schools and restaurants to shopping malls and the workplace — clear, intelligible sound is becoming an increasingly important part of everyday life, and in places where it previously was given little, or no, consideration at all. Distributed sound systems are now being viewed as a priority, not an afterthought.

At Electro-Voice, we’ve recognized the expanded role of today’s sound contractor, as well as the extra responsibilities associated with that new role. Specifying and installing a system is complex enough; deciding on the right products should be the easy part.

That’s why EV has taken much of the guesswork and “fear factor” out of specifying a commercial sound installation. In the past, contractors have faced the daunting task of matching different components that would deliver the best end result, from input to output. That’s changed, now, through EV’s “total design” approach. By offering a complete line of components that are specified and matched for optimal performance, EV customers and dealers can now easily assemble complete, end-to-end systems that deliver proven results in any commercial sound application.

Now we are combining three proven brands of product to help the systems contractor solve countless system design challenges. Our Dynacord, EV and University commercial sound products each bring a history of reliability, performance and value to any installation. No other manufacturer offers design innovation at every point in the system from the source to the speaker. This is the essence of EV’s “total design” concept and it is the perfect way to ensure that a message gets across quickly, clearly and under budget. But for a product line to be truly effective, it can never stop evolving. End-user needs don’t stop changing, so why should a product’s development?

EV is continually upgrading, testing, reevaluating and refining its products, to ensure that that they pass the most important test – meeting the needs of their users. It’s a constant work-in-progress, combining factory expertise with customer feedback. The end result is a commercial sound product line that represents a complete solution, offering everything from the industry’s most flexible digital matrix paging systems to the renowned EVID™ series of premium surface and ceiling mount speaker systems. These products make up the total system philosophy from initial specification to final installation.

Product Index Located Inside Back Cover

System Examples..... 2-3

EVID™ Systems..... 4-5

EVID™ Ceiling Speakers 6

Surface Mount Speakers 7

Ceiling Speakers 8-9

Ceiling Mounting..... 10

Horns..... 11

Paging Horns 12-13

Compression Drivers 14-15

Mixer/Amplifiers..... 16

Power Amplifiers 17

Paging Mics.... 18-19

Paging System Examples20

ProAnnounce™ System Units21

ProAnnounce™ Expansion Units22

ProAnnounce™ Amplifiers23

Index24-25

System Examples

EVID™ Systems

Surface Mount Speakers

Ceiling Speakers

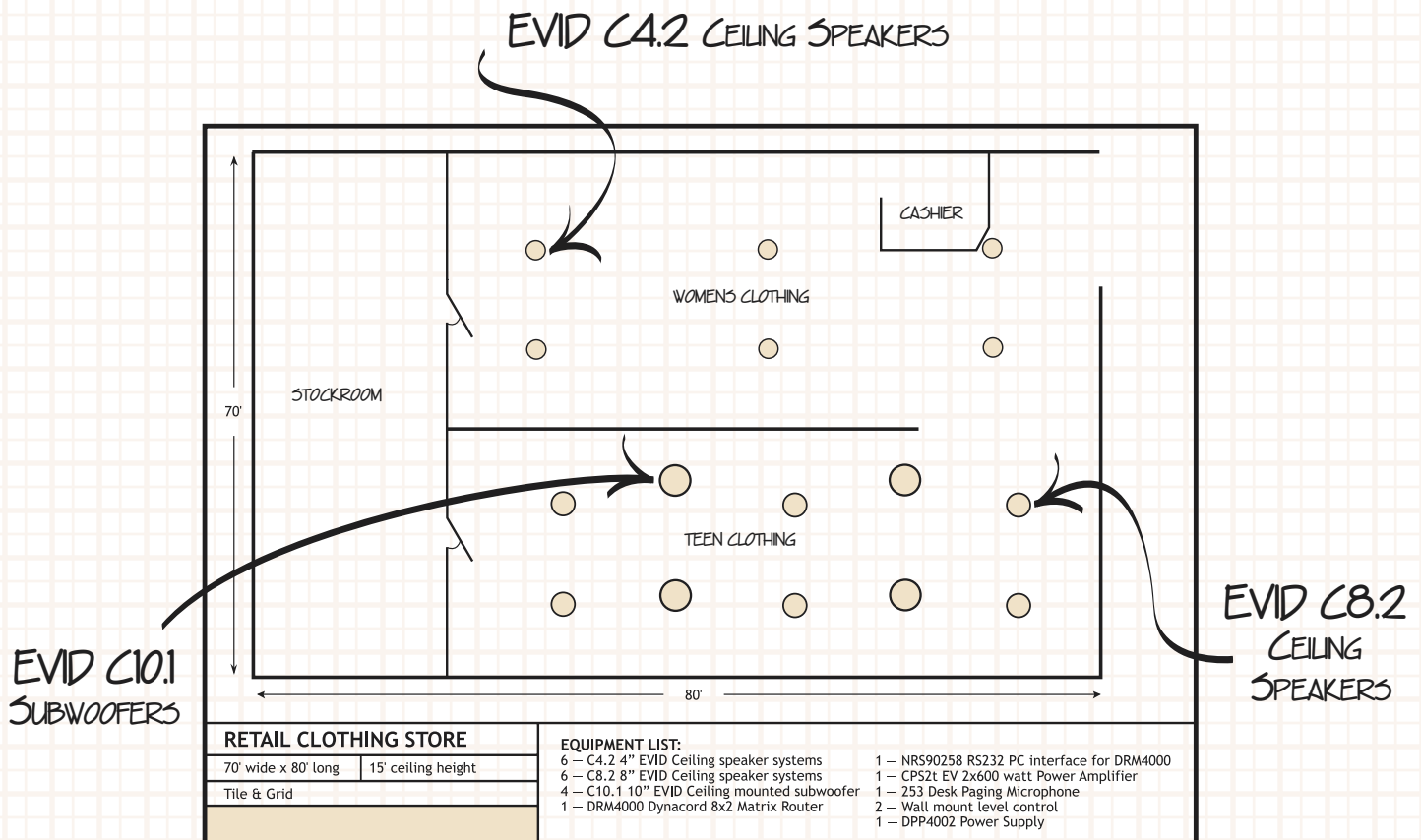
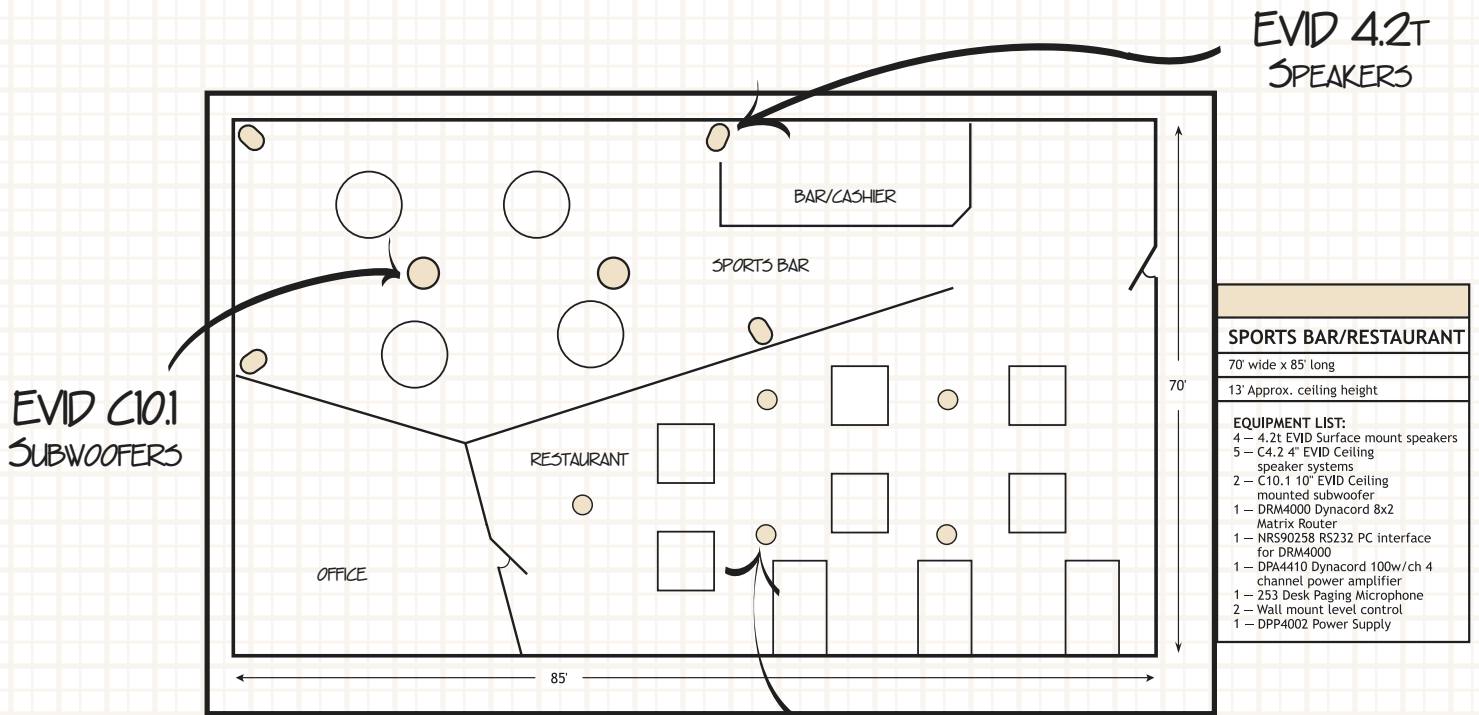
Horns and Drivers

Amplifiers

Paging Mics

ProAnnounce™

THE "TOTAL SYSTEM SOLUTION"



CALL EV TODAY! 1-800-685-6386

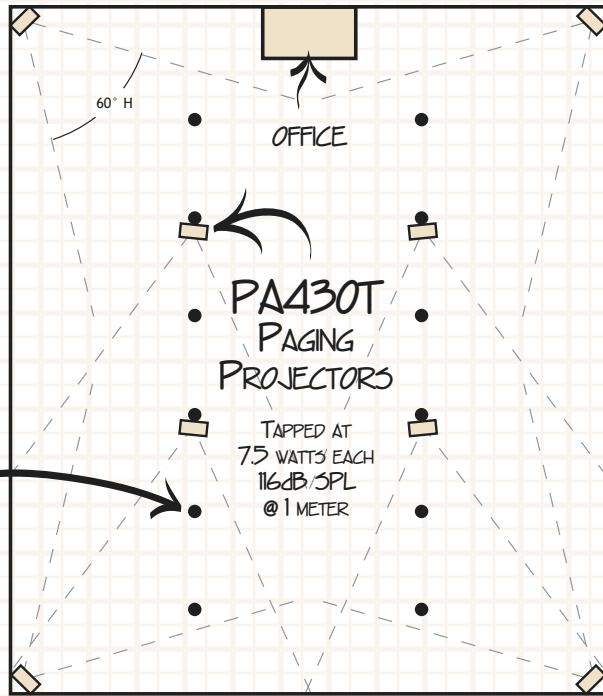
The EV/Dynacord advantage in distributed systems is in our “total system” approach.

Each product is designed with the system in mind. As these examples illustrate, EV, University and Dynacord

products can offer a complete distributed sound solution from the paging microphone to the ceiling speaker.

Each component is designed to work together resulting in easy-to-create system designs and trouble free operation.

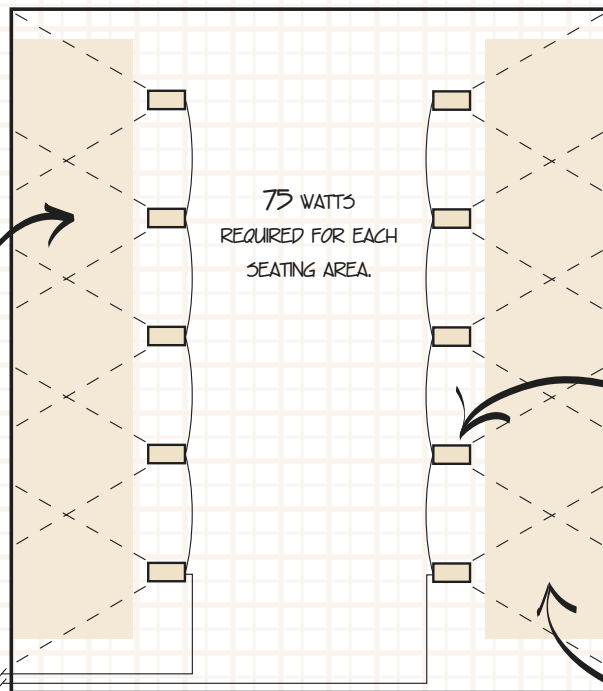
The key to our system approach is the variety of options available in every product category. From ceiling speakers and paging horns to power amplifiers and matrix routers, there are multiple models which enable the system designer to solve virtually any installation challenge.



WAREHOUSE
112' wide x 144' long
30' Approx. ceiling height
EQUIPMENT LIST:
1 – MA1212 120 watt Mixer Amplifier
8 – PA430T 30 watt Constant Directivity Paging Projector
4 – US602FL Noise Canceling Push PTT Hand microphone

PA430T PAGING PROJECTORS

TAPPED AT 15 WATTS EACH
119dB SPL @ 1 METER



BASKETBALL GYMNASIUM
100' wide x 150' long
28' Approx. ceiling height
EQUIPMENT LIST:
1 – MA1212 120 watt Mixer Amplifier
1 – 1407A 75 watt Power Amplifier
10 – CDP848AT 30 watt Compound Diffraction Paging Projector

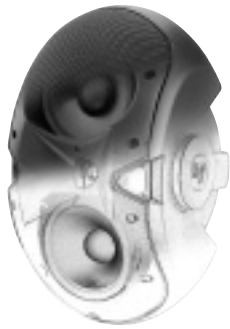
CDP848AT PAGING PROJECTORS

TAPPED AT 15 WATTS EACH MAX.
SPL 117dB AT 1 METER

SUPPORT COLUMNS

SEATING AREA

SEATING AREA



The EVID™ concept means innovation. Let's face it, EVID is not just another speaker. From the unique, superior design to its innovative acoustical integrity, EVID delivers value, performance and ease-of-use to the contractor and end listener alike. In designing EVID, we evaluated all the current products available and asked contractors and typical end users, "What do you want?" End users wanted something attractive and superior sounding amidst a world of plain black boxes. Contractors wanted a comprehensive line that would provide flexible choices for easier system design and installations. We took your answers back to the speaker lab. And we listened. With EVID, we have achieved these goals. The result is a comprehensive background/foreground speaker line with the key characteristics installers need and users want.

EVID 6.2 Extended Range – High output speaker system



Comprised of dual 6-inch LF drivers and a 1-inch Ti/waveguide, the EVID 6.2 is perfect for applications that require exemplary audio and the capability to fill large areas with sound. Additionally, the flexible Strong-Arm-Mount™ (SAM™) system provides the versatility to accommodate any installation challenge. EV's unique 6-inch dual woofer design delivers crisp and clean program for the utmost in listening experience regardless of the location. Great for larger areas that demand higher SPL levels, the 6.2 delivers the outstanding, full bass output required for shopping malls, stadiums, airports, etc.

EVID 6.2t Identical to the EVID 6.2 but features a line transformer that offers selectable taps at 7.5 W, 15 W, 30 W and 60 W, allowing for easy connection to 70-volt or 100-volt speaker lines in distributed systems.

EVID 4.2 Compact – Full-range multi-use speaker system



Perfect for a variety of environments where full-range audio is needed but space is limited: restaurants, bars, bistros, department stores, and outdoor venues. Offering the bass response of a much larger speaker, dual 4-inch woofers make the 4.2 a phenomenal performer. The 1-inch waveguide coupled titanium tweeter delivers controlled clean mids and highs. Combine it with the 12.1 Subwoofer for an amazing listening experience. Full system protection and EV's unique Strong-Arm-Mount™ (SAM™) make the EVID 4.2 a solid choice in any environment.

EVID 4.2t Identical to the EVID 4.2 but features a line transformer that offers selectable taps at 3.75 W, 7.5 W, 15 W and 30 W, allowing for easy connection to 70-volt or 100-volt speaker lines in distributed systems.

EVID 3.2 Very compact – Full-range speaker system



Loaded with dual 3.5-inch LF drivers and a 3/4-inch Ti direct radiator, the EVID 3.2 produces sound that defies its small size. Its unobtrusive profile is ideal for background music and paging support in a wide variety of environments (e.g., offices, retail stores, restaurants, etc.) Coupled with the 12.1 Subwoofer, two to four EVID 3.2 speakers deliver amazing SPL levels for foreground music.

EVID 3.2t Identical to the EVID 3.2 but features a line transformer that offers a tap at 5 W (10 W for 100-volt systems), allowing for easy connection to 70-volt or 100-volt speaker lines in distributed systems.

Specifications	6.2/6.2t	4.2/4.2t	3.2/3.2t
Frequency Response (-10 dB)	62 Hz-20 kHz	65 Hz-20 kHz	85 Hz-20 kHz
Power Handling	300 watts	200 watts	150 watts
Sensitivity 1 W @ 1 m	94 dB	89 dB	87 dB
Impedance	8 ohms	8 ohms	8 ohms
Max SPL	118 dB	113 dB	108 dB
Horz. Coverage	100°	120°	140°
Vertical Coverage	80°	80°	100°
LF Transducer	2 x 6" (150 mm)	2 x 4" (100 mm)	2 x 3.5" (90 mm)
HF Transducer	1" (25 mm)	1" (25 mm)	.75" (20 mm)
Protection	Full System	Full System	Full System

Specifications (Cont.)	6.2/6.2t	4.2/4.2t	3.2/3.2t
Suspension	Multi-Axis	Multi-Axis	Multi-Axis
Swing X Rotation	100° x 90°	100° x 90°	100° x 90°
Terminals	Spring	Spring	Spring
Enclosure Material	ABS (paintable)	ABS (paintable)	ABS (paintable)
"t" Version	70 V: 7.5 W	70 V: 3.75 W	5 W 70 V/10
Wattage Taps	70 V/100 V: 15 W, 30 W, 60 W	70 V/100 V: 7.5 W, 15 W, 30 W	W 100 V
Dimensions (H x W x D)	16.5" x 9" x 11.75"	12.2" x 6.9" x 8.5"	9.2" x 5.1" x 6.5"
	419 x 228 x 298 mm	310 x 175 x 216 mm	234 x 127 x 165 mm
Net Weight	12 lb. (5.3 kg)	8.5 lb. (3.9 kg)	3.3 lb. (1.5 kg)

Dual input subwoofer EVID 12.1

To augment and extend the low frequency response of any full-range models, an attractive and powerful subwoofer completes the EVID line. The 12.1 provides an easy installation by incorporating dual voice coils to handle both channels of a stereo pair. In addition, the unit can power up to four satellites with its four crossed-over audio outputs on the back panel.

12.1P Same as EVID 12.1 above but with integrated 300 watt single channel amplifier. Features adjustable 12dB/octave crossover, full range and high pass line level XLR pass thru outputs, and all mounting hardware.



Mounting Brackets

AB-34/AB-64 The AB-34 and 64 series kits feature a 4 sided powder coated steel mounting assembly allowing for 4 EVID speakers to be mounted in an array to cover a 360 degree pattern. The mount offers additional flexibility in your EVID system designs. The AB-34 works with the EVID 3.2 series and can be used with a threaded rod for suspension from the ceiling. The AB-64 is used with the EVID 4.2 or 6.2 series speakers and can be used with a speaker stand tripod or hung from the ceiling using a threaded rod as shown. All necessary accessories and parts needed for use are included.

AB-32/AB-62 The AB-32 and AB-62 series kits feature a 2 sided powder coated steel mounting assembly allowing for 2 EVID speakers to be mounted in an array to cover a 180 degree pattern. The AB-32 works with the EVID 3.2 series and can be used with a threaded rod for suspension from the ceiling. The speakers can then be positioned on the bracket to cover a variety of patterns to best serve the installation requirements. The AB-62 allows the EVID 4.2 or 6.2 series speakers to be used with a speaker stand tripod or hung from the ceiling utilizing a threaded rod as shown. All necessary accessories and parts needed for use are included.



Tabletop Stands

HS-3 The HS-3 horizontal tabletop stand allows the EVID 3.2 or 4.2 to sit on a table, meter bridge, desk, bookshelf or other flat surface. Ideal for portable applications, the stands are made of steel for strength and durability and include rubber feet to protect surfaces. Sold in pairs.

VS Series The VS Series vertical tabletop stands are available for any EVID full range model. The stands allow the EVID speakers to be easily used on a table, desk, bookshelf or other flat surface in a vertical configuration. Ideal for portable applications, the stands are made of plastic coated steel for strength and durability. Sold in pairs.



Terminal Covers

TC Series The TC-4 and TC-6 terminal covers protect the input connections on the EVID speakers from the long-term effects of moisture. The covers are available for the EVID 4.2 and 6.2 series models. The covers easily attach to the rear input panel of the speaker and include a weatherproof cable connector.



Specifications	12.1/12.1P	Specifications (Cont.)	12.1/12.1P
Frequency Response (-10 dB)	40 Hz-140 Hz	Terminals	Spring
Power Handling	175/175 watts	Enclosure Material	MDF, Steel fastener reinforced
Sensitivity 1 W @ 1 m	100 dB	"t" Version	—
Impedance	8 ohms	Wattage Taps	—
Max SPL	122 dB	Dimensions (H x W x D)	16.5" x 23" x 12" 412 x 584 x 305 mm
Horz. Coverage	—	Net Weight	40 lb. (18.1 kg)
Vertical Coverage	—		
LF Transducer	12" (300 mm) High excursion dual voice coil		
HF Transducer	—		
Protection	—		

System Examples

EVID™ Systems

Surface Mount Speakers

Ceiling Speakers

Horns and Drivers

Amplifiers

Paging Mics

ProAnnounce™

5.25-inch 160-watt two-way system S-40TB

A 5.25-inch, 160-watt two-way monitor loudspeaker system. Ideal for distributed sound applications that require high-quality sound reproduction. The low-frequency section is a 5.25-inch direct-radiating woofer with a polypropylene cone installed in an optimally vented, high-impact polystyrene enclosure. The high-frequency section is a 1-inch direct-radiating soft dome tweeter. The system's circuits automatically reduce power delivery to the drivers if their threshold is exceeded, greatly reducing the possibility of driver failure. The S-40TB utilizes a transformer that offers a selection of 1.9, 3.8, 7.5, 15 and 30 watts delivered to the loudspeaker system using either 70-volt or 100-volt lines.

S-40TW Same as the S-40TB except with a white cabinet.

S-40 Low impedance versions

S-40B Same as the S-40TB except no 70/100-volt matching transformer. Low impedance input with push terminal connectors.

S-40W Same as the S-40TW except no 70/100-volt matching transformer. Low impedance input with push terminal connectors.

S-40 Mounting hardware

S-40MBB Wall/ceiling/stand U-brackets for S-40B, S-40TB (black) pair

S-40MBW Wall/ceiling/stand U-brackets for S-40W, S-40TW (white) pair



8-inch 175-watt two-way constant-directivity system SX-80TB

An 8-inch, 175-watt two-way, high-efficiency, constant-directivity speaker system for distributed sound applications requiring excellent sound reproduction. The small size, high sensitivity and high power-handling capacity of the SX-80TB make it an excellent choice for use in studios, clubs, bars, theaters or other applications. The high-frequency section of the model utilizes a molded-in 90° x 65° constant-directivity horn — a unique pattern that contributes to high intelligibility and aims the speaker output where it is most useful. The low-frequency section is an 8-inch direct-radiating woofer installed in an optimally-vented enclosure — resulting in exceptionally extended bass response and high efficiency in a very small cabinet. An internal, 60-watt line transformer offers selectable taps at 1.9, 3.8, 7.5, 15, 30 and 60 watts, allowing for easy connection to 70-volt or 100-volt speaker lines in distributed systems. Model comes in a black cabinet.

SX-80TW Same as the SX-80TB except with a white cabinet.

SX-80PIX Same as the SX-80TB except with weather-resistant construction including a full face grille. Woofer cone is treated to resist the effects of moisture and humidity. Black polystyrene cabinet.

SX-80 Low impedance versions

SX-80B Same as the SX-80TB except no 70/100-volt matching transformer. Low impedance input with push terminal connectors.

SX-80W Same as the SX-80TW except no 70/100-volt matching transformer. Low impedance input with push terminal connectors.

SX-80PI Same as the SX-80PIX except no 70/100-volt matching transformer. Low impedance input with push terminal connectors.

SX-80 Mounting hardware

SX-80MBB Wall/ceiling/stand U-bracket for SX-80B, SX-80TB, SX-80PIX, SX-80PI (black)

SX-80MBW Wall/ceiling/stand U-bracket for SX-80W, SX-80TW(white)



Specifications	S-40 Series	SX-80 Series
Frequency Response	70-20,000 Hz + 3 dB	70-20,000 Hz + 3 dB
Power Handling (long/short term)	175 watts/700 watts	175 watts/700 watts
Sensitivity	92 dB (1 watt/ 1 m)	92 dB (1 watt/ 1 m)
Output @ 1 m (continuous/peak)	114.5 dB/120.5 dB	114.5 dB/120.5 dB
Coverage (H x V)	100° x 100°	90° x 65°
Impedance (nominal)	4 ohms	8 ohms
Dimensions (H/W/D)	15.75 in. x 11.5 in. x 8.75 in. (400 mm x 292 mm x 222 mm)	15.75 in. x 11.5 in. x 8.75 in. (400 mm x 292 mm x 222 mm)
Net Weight	16 lb. (7.3 kg)	16 lb. (7.3 kg)
Shipping Weight	18 lb. (8.18 kg)	18 lb. (8.18 kg)



205-8T 4-inch 10-watt continuous full-range speaker

A 4-inch, 10-watt continuous full-range speaker. An acoustically transparent dome encloses a small, centrally mounted free-edge cone that is used to improve high-frequency dispersion. Suitable for applications requiring highly intelligible speech or smooth musical reproduction. This model includes an 8-watt transformer, allowing connections to 70.7/100-volt line, with taps of 1, 2, 4 and 8 watts.

205-4T Same as 205-8T except with a 4-watt transformer, allowing connections to 25-, 70.7-, 100-volt line, with taps of 0.5 to 4 watts.

205-8A Same as 205-8T without factory-mounted transformer. 8-ohm impedance, 10 watts.



405-4T 4-inch compact 4-watt full-range high performance speaker

A 4-inch, compact 4-watt full-range high performance ceiling loudspeaker. This model offers an extended 60-15,000 Hz range, ensuring clear, intelligible speech and good music reproduction. The die-cast aluminum frame houses a magnetic structure fabricated of heavy gauge steel. The small size of the speakers allows either front or rear mounting in walls, partitions, ceilings and into volumes as low as 0.1 cubic feet. Model 405-4T has a factory-mounted matching transformer allowing the loudspeaker to be run from 70.7-volts or 100-volt transmission lines, drawing 0.5, 1, 2 or 4 watts.

405-8H Same as 405-4T without factory-mounted transformer. 8-ohm impedance, 16 watts.



PRO-8A 8-inch 30-watt premium two-way speaker

The PRO-8A is accurate, highly intelligible and musical sounding loudspeaker that is well suited for the reproduction of both voice and music. The PRO-8A employs an unusually large 1-1/2-inch voice coil. This provides increased apex-driving-point cone area and greater thermal capabilities. The result is higher acoustic power output than other brands, which translates into unmatched durability and reliability at lower levels. High frequencies are reproduced by a 1-1/2-inch piezoelectric tweeter that is mounted directly to the pole piece of the woofer. The tweeter being mounted to a stationary surface at the apex of the woofer minimizes intermodulation distortion and allows for improved time alignment over other coaxial ceiling speaker designs. An acoustically transparent dust dome mounted on the woofer cone encapsulates the tweeter offering excellent dust protection for both the woofer voice coil and the tweeter. The PRO-8A series of speakers may be used in ported enclosures where improved low-frequency response is desired. Placing the loudspeaker in an enclosure of 1.0 cubic foot with a box-tuning frequency of 75 Hz will yield a -3 dB point of 80 Hz. An 80 Hz tuning may be obtained with a port having an area of 7.0 square inches and a length of 0.75 inches.

PRO-8AT5 Same as PRO-8A except it comes with a 70.7/100-volt line transformer offering a selection of 0.62-, 1.25-, 2.5- and 5-watt taps.

PRO-8AT30 Same as PRO-8A except it comes with a 70.7/100-volt line transformer offering a selection of 3.75-, 7.5-, 15- and 30-watt taps.

Specifications	205-8A	205-4T	205-8T	405-8H	405-4T	PRO-8A	PRO-8AT5	PRO-8AT30
RMS Power @ 8 Ohms	10 W	—	—	16 W	—	30 W	—	—
Frequency Response	90-18,000 Hz	90-18,000 Hz	90-18,000 Hz	60-15,000 Hz	60-15,000 Hz	82-16,000 Hz	82-16,000 Hz	82-16,000 Hz
Sensitivity 1 W @ 1 m	91 dB	91 dB	91 dB	90 dB	90 dB	96 dB	96 dB	96 dB
Max SPL @ Full Power	101 dB	101 dB	101 dB	102 dB	102 dB	110 dB	110 dB	110 dB
Transformer	8 ohms	0.25, 0.5, 1, 2, 4	1, 2, 4, 8	8 ohms	0.5, 1, 2, 4	8 ohms	0.62, 1.25, 2.5, 5	3.75, 7.5, 15, 30
Height	2.2 in. (56 mm)	3.7 in. (94 mm)	3.7 in. (94 mm)	2.12 in. (54 mm)	4.06 in. (103.2 mm)	3.15 in. (80 mm)	3.15 in. (80 mm)	3.15 in. (80 mm)
Net Weight	2 lb. (0.9 kg)	2.8 lb. (1.26 kg)	2.8 lb. (1.26 kg)	2.1 lb. (0.94 kg)	2.9 lb. (1.2 kg)	2.7 lb. (1.2 kg)	3.1 lb. (1.4 kg)	3.1 lb. (1.4 kg)

8-inch 10-watt full-range ceiling speaker 209-4T

An 8-inch, 10-watt full-range ceiling loudspeaker. The acoustically transparent dome encloses a small, centrally mounted free-edge cone for improved high-frequency speech or music dispersion. The 209-4T transformer allows connections to 25-, 70-, 100-volt line, with taps of 0.5, 1, 2 and 4 watts.

209-8A Same as 209-4T without factory-mounted transformer. 8-ohm impedance, 10 watts.

209-4TWB An 8-inch, 10-watt full-range loudspeaker for distributed sound systems. Nominal 8-ohm impedance. Suitable for use in applications requiring highly intelligible speech reproduction. An acoustically transparent dome encloses a small, centrally mounted free-edge cone that is used to improve high-frequency dispersion. This model comes pre-mounted on a ceiling grille and includes a transformer that allows for connections to 25-, 70-, 100-volt line, with taps of 0.5 to 4 watts.



8-inch 16-watt ceiling speaker 309-8T

An 8-inch, 16-watt ceiling loudspeaker. The design provides wide dispersion, high-efficiency, high maximum output for wide-range reproduction of music or voice. The loudspeakers feature 8-inch low-frequency cones and high-temperature voice-coil assemblies coaxially mounted with wide-dispersion cone tweeters. Dual-magnet construction allows each speaker to be structurally, magnetically, electrically and mechanically independent from each other. The 309-8T utilizes a crossover network, centered at 3,000 Hz and providing 6 dB of attenuation for the tweeter outside its operating range. This model comes with a 70.7/100-volt line transformer that offers < 1 dB insertion loss and a selection of 1-, 2-, 4- and 8-watt taps.

309-4T Same as 309-8T except it comes with a 25-, 70.7-, 100-volt line transformer that offers < 1 dB insertion loss and a selection of 0.5-, 1-, 2- and 4-watt taps.

309-8A Same as 309-8T without factory-mounted transformer. 8-ohm impedance, 16 watts.

309-8TWB An 8-inch, 16-watt ceiling loudspeaker. The design provides wide dispersion, high-efficiency, high maximum output for wide-range reproduction of music or voice. Loudspeakers feature 8-inch low-frequency cones and high-temperature voice-coil assemblies coaxially mounted with wide-dispersion cone tweeters. Dual-magnet construction allows each speaker to be structurally, magnetically, electrically and mechanically independent from each other. The 309-8TWB utilizes a crossover network, centered at 3,000 Hz and providing 6 dB of attenuation for the tweeter outside its operating range. This model comes pre-mounted on a ceiling grille and includes a 70.7/100-volt line transformer that offers < 1 dB insertion loss and a selection of 1-, 2-, 4- and 8-watt taps.

309-4TWB Same as the 309-8TWB except it comes with a 25-, 70.7-, 100-volt line transformer that offers < 1 dB insertion loss and a selection of 0.5-, 1-, 2- and 4-watt taps.



8-inch 32-watt premium high performance speaker 409-16T

An 8-inch, 32-watt premium high-performance ceiling loudspeaker. The loudspeakers' 8-inch low-frequency cones and high-temperature voice-coil assemblies are coaxially mounted with wide-dispersion cone tweeters. The dual magnet construction allows each speaker to be structurally, magnetically, electrically and mechanically independent of the other. This model utilizes a single-section crossover network, centered at 2,500 Hz and providing 6 dB of attenuation for each element outside its operating range. Featuring a 15716 transformer for a 70.7/100-volt line, the 409-16T offers 2-, 4-, 8- and 16-watt taps.

409-32T Same as 409-16T except it comes with a 15732 transformer offering a selection of 4-, 8-, 16- and 32-watt taps.

409-8T Same as 409-16T except it comes with a 15708 transformer offering a selection of 1-, 2-, 4- and 8-watt taps.

409-8E Same as 409-16T without factory-mounted transformer. 8-ohm impedance, 16 watts.



Specifications	209-8A	209-4T/TWB	309-8A	309-4T/TWB	309-8T/TWB	409-8E	409-8T	409-16T	409-32T
RMS Power @ 8 Ohms	10 W	—	15 W	—	—	32 W	—	—	—
Frequency Response	80-15,000 Hz	80-15,000 Hz	85-18,000 Hz	85-18,000 Hz	85-18,000 Hz	85-18,000 Hz	85-18,000 Hz	85-18,000 Hz	85-18,000 Hz
Sensitivity 1 W @ 1 m	94 dB	94 dB	96 dB	96 dB	96 dB	97 dB	97 dB	97 dB	97 dB
Max SPL @ Full Power	104 dB	101 dB	108 dB	108 dB	108 dB	112 dB	112 dB	112 dB	112 dB
Transformer	8 ohms	0.25, 0.5, 1, 2, 4	8 ohms	0.25, 0.5, 1, 2, 4	1, 2, 4, 8	8 ohms	1, 2, 4, 8	2, 4, 8, 16	4, 8, 16, 32
Height (TWB)	2.8 in. (71 mm)	2.8 in. (71 mm) 3 in. (76 mm)	2.8 in. (71 mm)	2.8 in. (71 mm) 3 in. (76 mm)	2.8 in. (71 mm) 3 in. (76 mm)	3.25 in. (83 mm)	4.50 in. (114 mm)	4.86 in. (124 mm)	5.38 in. (137 mm)
Net Weight (TWB)	2.2 lb. (1 kg)	3 lb. (1.35 kg) 3.6 lb. (1.6kg)	2.8 lb. (1.26 kg)	3.1 lb. (1.4 kg) 5.1 lb. (2.3 kg)	3.1 lb. (1.4 kg) 5.1 lb. (2.3 kg)	2.8 lb. (1.3 kg)	4 lb. (1.8 kg)	4.5 lb. (2.0 kg)	5 lb. (2.3 kg)

System Examples

EVID™ Systems

Surface Mount Speakers

Ceiling Speakers

Horns and Drivers

Amplifiers

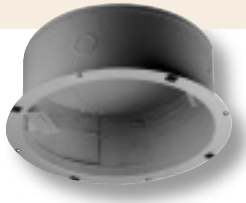
Paging Mics

ProAnnounce™

CEILING SPEAKER MOUNTING COMPONENTS

System Examples
EVID™ Systems
Surface Mount Speakers
Ceiling Speakers
Horns and Drivers
Amplifiers
Paging Mics
ProAnnounce™

5184-E Round back enclosure



.6 cu.ft. round back enclosure for 8-inch speaker (for existing construction)

5184-N 1.5 cu.ft. round back enclosure for 8-inch speaker (for new construction)

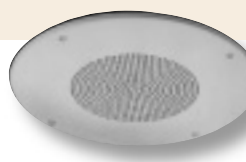
5195-X Round back enclosure



Back enclosure, 1/4 cu. ft. for 5295-WM grille. 4-inch speaker

5295-W Grille assembly. Round grille, white, screw mounting

5281-W Round grille



8-inch round loudspeaker grille with white finish 12.63-inch diameter (32.1-centimeter diameter)

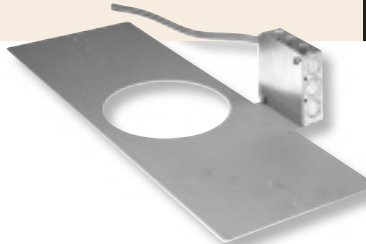
RR-42 Rough-in mounting plate

For use with the EVID C4.2 (package of 4)



RPK-42 Rough-in mounting system

For use with the EVID C4.2. Includes junction box and flexible conduit to support pre-wiring of the installation (package of 2)



EVID Ceiling Speaker Installation Accessories

RR-82 Rough-in mounting plate for use with the EVID C8.2 and C8.2LP (package of 4)

RR-810 Rough-in mounting plate for use with the EVID C8.2HC and C10.1 (package of 4)

RPK-82 Rough-in mounting system for use with the EVID C8.2 and C8.2LP. Includes junction box and flexible conduit to support pre-wiring of the installation (package of 2)

RPK-810 Rough-in mounting system for use with the EVID C8.2HC and C10.1. Includes junction box and flexible conduit to support pre-wiring of the installation (package of 2)

Cross-reference chart Ceiling speakers and hardware

Speaker	Box	Depth	Cu. Ft.	Shape	Grilles	T-Bridge
All 209's, All 309's 409-8E, All Pro-8A's	5184-E <i>Existing Construction</i>	4-1/8"	.6	Round	5281-W round	5487-X
All 209's, All 309's 409-8E, All Pro-8A's	5184-N <i>New Construction</i>	4-1/8"	.5	Round	5281-W round	—
All 205's, All 405's	5195-X	6-13/16"	.25	Round	5295-W round screw mounting	—

Speaker Transformers

15704 4-watt speaker transformer for 70.7-volt line with 0.5-, 1-, 2- and 4-watt taps. 0.5 dB insertion loss.

15708 8-watt speaker transformer for 25/70.7-volt line with 1-, 2-, 4- and 8-watt taps. 0.5 dB insertion loss.

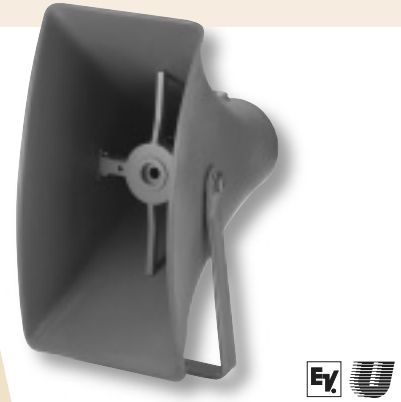
15716 16-watt speaker transformer for 70.7-volt line with 2-, 4-, 8-, and 16-watt taps. 0.5 dB insertion loss.

15732 32-watt speaker transformer for 70.7-volt line with 4-, 8-, 16- and 32-watt taps. 0.5 dB insertion loss.

Compound diffraction projector FC100

A compound diffraction horn consisting of two sections for use with 1828 or 1829 series drivers. The folded construction of the rear horn coupled with the smaller dimensions of the front horn provides a more extended frequency response and cleaner sound. FC100 comes in weather-resistant gray and includes an integral mounting bracket. Compound diffraction design, wide coverage pattern, and 150°H x 110° V at 2 kHz dispersion.

Compatible Drivers



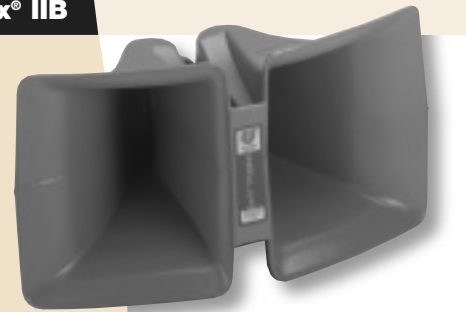
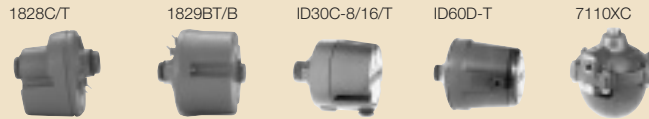
System Examples

EVID™ Systems

Folded sectoral horn Cobreflex® IIB

A folded sectoral horn for all driver models in the 1824S, 1828, 1829, ID30, ID60 series and 7110XC. Features a patented design that eliminates high frequency phase cancellation and improves intelligibility. Cobreflex IIB provides an 80° x 60° dispersion, comes in weather-resistant gray and includes an integral mounting bracket. High efficiency and low cutoff frequency in a compact package.

Compatible Drivers



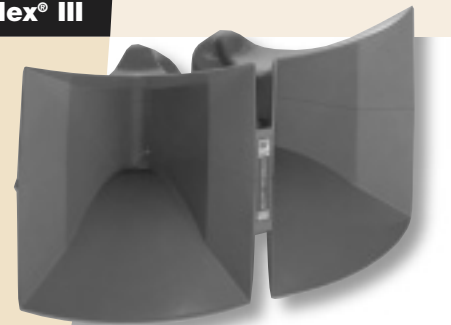
Surface Mount Speakers

Ceiling Speakers

Folded sectoral horn Cobreflex® III

A folded sectoral horn for all driver models in the 1824S, 1828, 1829, ID30, ID60 series and 7110XC. Features a patented design that eliminates high frequency phase cancellation and improves intelligibility. Cobreflex III provides an 100° x 60° dispersion, comes in weather-resistant gray and includes an integral mounting bracket. High efficiency and low cutoff frequency in a compact package.

Compatible Drivers



Horns and Drivers

Amplifiers

Specifications	FC100
Low-Freq Rolloff ¹ -12 dB	260 Hz
Dispersion ² 2 kHz	150° H x 110° V
Dimensions, in. (cm)	20.5 H x 10.5 W x 20.0 D (52.0 H x 26.5 W x 51.0 D)
Shipping Weight	21 lb. (9.5 kg)

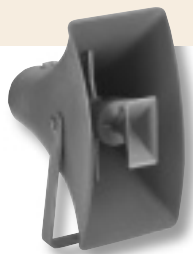
Specifications	Cobreflex IIB	Cobreflex III
Beamwidth (@ 2 kHz)	80° H x 60° V	100° H x 60° V
Directivity Factor, R ₀ (Q)	9.1 @ 2 kHz	15.9 @ 2 kHz
Lower Usable Limit	250 Hz min.	250 Hz min.
Dimensions, in. (cm)	9.3 H x 18.5 W x 10.3 D (23.6 H x 47.0 W x 26.2 D)	14.5 H x 27.5 W x 15.0 D (36.8 H x 69.9 W x 38.1 D)
Net Weight	5.1 lb. (2.3 kg)	7 lb. (3.2 kg)
Shipping Weight	6.7 lb. (3.0 kg)	10 lb. (4.5 kg)

1. Low frequency limit based on capability of driver used. If horn cutoff is higher than rated limit of driver, cutoff will be determining factor.
2. Polar curves @ 10' in an anechoic chamber, 1/3 octave band-limited pink noise (-6 dB points).

Paging Mics

ProAnnounce™

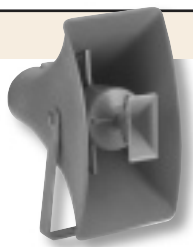
System Examples



CDP-848AT 30-watt compound diffraction projector

A 30-watt compound diffraction projector. Wide range, integrated horn-and-driver system. Single driver is fitted to two coaxial horns, each coupled to opposite sides of the driver diaphragm. Weather-resistant gray with 150° H x 110° V at 2 kHz. Compound diffraction design allows for more uniform dispersion throughout the frequency range. The CDP-848AT features a 30-watt 1828T driver, 260 Hz-10 kHz frequency response, uniform dispersion over the frequency range and heavy-duty drivers with 25/70.7-volt transformers offering 0.5-, 1-, 2-, 4-, 8-, 15- and 30-watt taps.

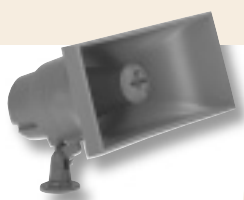
EVID™ Systems



CDP-850T 60-watt compound diffraction projector

A 60-watt compound diffraction projector. Wide range, integrated horn-and-driver system. Single driver is fitted to two coaxial horns, each coupled to opposite sides of the driver diaphragm. Weather-resistant gray with 150° H x 110° V at 2 kHz. Compound diffraction design allows for more uniform dispersion throughout the frequency range. The CDP-850T features a 60-watt 1829BT driver, 280 Hz-8 kHz frequency response, uniform dispersion over the frequency range and heavy-duty drivers with 25/70.7-volt transformer offering 8-, 15-, 30- and 60-watt taps.

Surface Mount Speakers



CFID32-T 32-watt paging projector

This 32-watt paging projector is designed for high speech intelligibility under adverse ambient conditions. Low distortion and smooth frequency response make the CFID32-T a good choice for background music in indoor or outdoor applications. 55° H x 74° V at 2 kHz, 25/70.7-volt transformer with 1.25-, 2.5-, 5-, 10-, 15- and 32-watt taps. CFID32-T comes in weather-resistant gray and offers diffraction effect for wide horizontal dispersion, 330 Hz-4.2 kHz frequency response, integral swivel bracket and weather-sealed gland-nut connection.

Ceiling Speakers



IBC8 30-watt reentrant paging projector/talkback speaker

The IBC8 is a 30-watt high-powered reentrant paging projector/talkback speaker. Designed for use in adverse ambient conditions, the IBC8 is weather-resistant and appropriate for outdoor or indoor use. Features 60° dispersion at 2 kHz, integral swivel mounting bracket, gray color and 8-ohm impedance.

Horns and Drivers



MM2/MM2F/MM2TC 25-watt submergence proof speakers

MM2 A 25-watt submergence-proof design (U.S. Navy specification) with a serrated mounting bracket allowing for a 90° arc swivel. Ideal for use near water or spray. The gray MM2 features an 82° x 82° dispersion pattern and 16-ohm impedance. Each unit is fully protected against damage from high humidity, salt water and other environmental conditions.

MM2F Same as MM2 except with a flush mount designed for mounting on the front surface of bulkhead, wall or ceiling.

MM2TC Same as MM2 except with a surface/bulkhead mount and watertight internal matching transformer compartment. Requires University Sound 5030 transformer part no. 56-05-022109-04.

Amplifiers

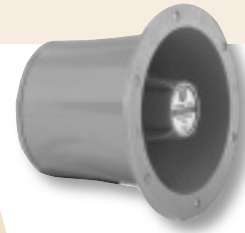
Paging Mics

ProAnnounce™

Specifications	CDP-848AT	CDP-850T	CFID32-T	IBC8
Power Handling (500 Hz-5 kHz)	30 watts	60 watts	32 watts	30 watts
Frequency Response	260 HZ-10 kHz	280 Hz-8 kHz	330 Hz-4.2 kHz (±5 dB)	500 Hz-7 kHz (±5 dB) 350 Hz lower usable limit
Acoustic Crossover	1 kHz	1 kHz	N/A	—
Sensitivity (1m, 500 Hz-5kHz)	105 dB SPL, 1 W, 1 m	105 dB SPL, 1 W, 1 m	107 dB SPL, 1 W	107 dB SPL, 1 W, 1 m
Impedance	70.7 V transformer	70.7 V transformer	25 or 70.7 V Xfmr for -T models	8 ohms nominal
Beamwidth (@ 2 kHz)	150° H x 110° V	150° H x 110° V	55° H x 74° V	60°
Directivity Factor, R ₀ (Q)	7.4 @ 2 kHz	5.2 @ 2 kHz	16.3 @ 2 kHz	N/A
Sensitivity as Microphone	—	—	-26 dBm	-26 dBm (ref.: 10 dynes/cm ²)
Dimensions, in. (cm)	20.5 H x 10.5 W x 20.0 D (52.0 H x 26.5 W x 51.0 D)	20.5 H x 10.5 W x 20.0 D (52.0 H x 26.5 W x 51.0 D)	7.1 H x 14.4 W x 12.5 D (18.1 H x 36.5 W x 31.8 D)	10.5 dia. x 9.0 deep (26.0 dia. x 22.9 deep)
Shipping Weight	18 lb. (8.2 kg)	21 lb. (9.5 kg)	CFID 32-8: 6 lb. (2.7 kg) CFID 32-T: 6.3 lb. (2.9 kg)	4.5 lb. (2.0 kg)

10-watt paging/talkback projector MIS8C

The MIS8C is a 10-watt paging/talkback projector with a compact design for flush mounting on walls and cabinets. Ideally suited for paging and general communication applications. The gray MIS8C features 100° dispersion and 8-ohm impedance.



30-watt constant-directivity paging projector PA430T

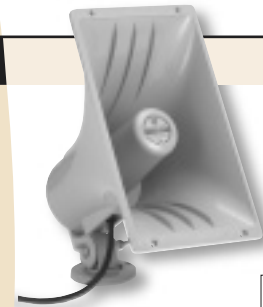
This horn is designed to provide a dispersion pattern that is constant over a 2 kHz to 10 kHz frequency range, reducing the number of horns needed to cover an area. The tan, weather-resistant PA430 features a 60° x 40° dispersion pattern, integral swivel bracket and a 25-, 70.7-, 100-volt transformer with 1.9-, 3.7-, 7.5-, 15- and 30-watt taps.

PA430 Same as PA430T except without a transformer, 8-ohm impedance.



60-watt reentrant paging projector PA60

This weather-resistant projector is an excellent choice for any outdoor or indoor public address/paging application where reliability and durability are important. Driver employs a rugged phenolic diaphragm and a “rim-centered” ferrite magnetic structure for dependability under extreme operating conditions. Durable ABS horn and die-cast zinc integral swivel mount. The tan PA60 provides an 80° x 50° dispersion pattern and 8-ohm impedance.



30-watt underwater speaker UW30

The UW30 underwater speaker is equipped with a waterproof, 3-conductor 50-foot cable. 8-ohm impedance, available in pool blue. Underwater speakers are required by the American Athletic Union for synchronized swimming events and instructions in Olympic pools. They are also ideal for water ballets or similar water shows and resort or private pools. Built for installation in both fresh and salt water pools, the UW30 can even be safely installed in ocean environments. Designed for permanent installation and completely submerged operation. Problems such as corrosion and electrolysis damage are completely eliminated due to the plastic construction. The 12.7-ounce ceramic magnet and state-of-the-art voice-coil construction assure full-fidelity response with the lowest possible distortion throughout its power range. One speaker is recommended for pools up to 30 by 30 feet, or two speakers for pools up to 30 by 60 feet.



Specifications	MM2	MM2F	MM2TC	UW30
Power Handling (500 Hz-5 kHz pink noise)	25 watts	25 watts	25 watts	30 watts
Frequency Response (±5 dB)	800 Hz-5 kHz	800 Hz-5 kHz	800 Hz-5 kHz	100 Hz-10 kHz
Sensitivity (dB SPL @ 1 W, 1 m)	104 dB SPL	104 dB SPL	104 dB SPL	N/A
Nominal Impedance	16 ohms	16 ohms	16 ohms (w/o line transformer)	8 ohms
Dimensions, in. (cm)	6.0 dia. x 5.0 D (15.2 dia. x 12.7D)	7.3 dia. x 3.8 D (18.5 dia. x 9.7D)	10.0 H x 6.4 W x 4.4 D (25.4 H x 16.3 W x 11.2 D)	7.2 dia. x 2.6 D (18.3 dia. x 6.6 D)
Net Weight	5.3 lb. (2.4 kg)	6 lb. (2.7 kg)	8.8 lb. (4.0 kg)	4 lb. (1.8 kg)

Specifications	PA430 & PA430T	PA60
Power Rating (500 Hz-5 kHz)	30 watts	60 watts
Frequency Response	400 Hz-6.5 kHz, ±5 dB, 350 Hz lower usable limit	600 Hz-6.5 kHz (±5 dB)
Sensitivity 1m (500 Hz-5 kHz) pink noise	107 dB SPL, 1W, 1m, (500 Hz-5 kHz pink noise)	107 dB SPL
Impedance	8 ohms nominal (PA430T: 5-way power selector)	8 ohms
Beamwidth (@ 2 kHz)	60° H (±20°); -6 dB points 1 kHz through 10 kHz; 40° V (+20°, -10°); -6 dB points 2 kHz through 10 kHz	80° H x 50° V @ 2 kHz
Directivity Factor, R₀ (Q)	15.2 @ 2 kHz	7.9 @ 2 kHz
Dimensions, in. (cm)	8.9 H x 12.1 W x 12.2 D (22.6 H x 30.7 W x 31.0 D)	11.0 H x 6.5 W x 8.5 D (27.9 H x 16.5 W x 21.6D)
Shipping Weight	PA430: 3 lb. (1.4 kg) PA430T: 3.8 lb. (1.7 kg)	4.1 lb. (1.8 kg)

System Examples

EVID™ Systems

Surface Mount Speakers

Ceiling Speakers

Horns and Drivers

Amplifiers

Paging Mics

ProAnnounce™

System Examples

EVID™ Systems

Surface Mount Speakers

Ceiling Speakers

Horns and Drivers

Amplifiers

Paging Mics

ProAnnounce™

1828T 30-watt driver for compound diffraction projector



A 30-watt heavy-duty convertible driver designed for use with compound diffraction horns. Designed for general public address applications, the 1828T includes a built-in transformer with selectable power taps at 0.5, 1, 2, 4, 8, 15, 30 watts to accommodate 25- and 70.7-volt lines. Weather-resistant for outdoor or indoor use, dual 1-inch screw-on exit, wide frequency response. Comes with threaded plug to convert to conventional driver.

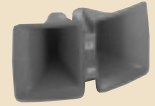
1828C Same as 1828T except without transformer, 8-ohm impedance.

Compatible Horns

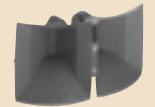
FC100



Cobreflex IIB



Cobreflex III



1829BT 60-watt driver for compound diffraction projector



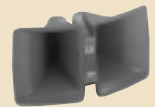
A 60-watt heavy-duty convertible driver designed for use with compound diffraction horns. Designed for general public address applications, the 1829BT includes a built-in transformer with selectable power taps at 8, 15, 30 and 60 watts to accommodate 70.7-volt lines. Weather-resistant for outdoor or indoor use, dual 1-inch screw-on exits, wide frequency response. Comes with threaded plug to convert to conventional driver.

Compatible Horns

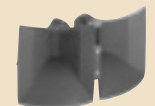
FC100



Cobreflex IIB



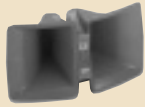
Cobreflex III



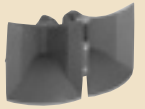
Specifications	1828C/1828T	1829BT
Power Handling (500 Hz-5 kHz pink noise)	30 watts	60 watts
Frequency Response	260 Hz-10 kHz, ±5 dB	280 Hz-8 kHz, ±5 dB
Sensitivity (1 W, 1 m, 500 Hz-5 kHz pink noise, Cobreflex III horn)	105 dB SPL (*on FC100)	105 dB SPL (*on FC100)
Nominal Impedance	8 ohms	16 ohms
Dimensions, in. (cm)	3.3 dia. x 4.0 depth (8.4 dia. x 10.2 depth)	5.3 dia. x 4.1 depth (13.5 dia. x 10.4 depth)
Net Weight	4.7 lb. (2.1 kg) 1828T: 5 lb. (2.3 kg)	7 lb. (3.2 kg) 1829T: 9.8 lb. (4.4 kg)

30-watt explosion proof driver 7110XC

Compatible Horns

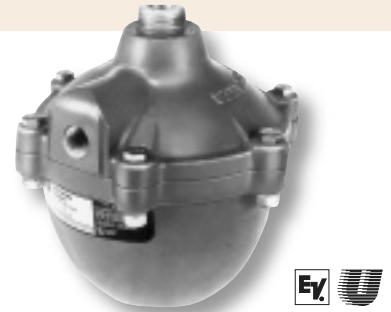


Cobreflex IIB



Cobreflex III

A 30-watt “explosion-proof” driver that will not create a spark or detonate in an explosive atmosphere. Integral sintered bronze acoustic screen and heavy die-cast aluminum case meet the UL standards for explosion-proof classification. Meets or exceeds standards for use in hazardous areas classified as Class I – Groups B, C and D, plus Class II – Groups E, F and G. Dual 1-inch screw-on exits, 8-ohm impedance. Driver housing is designed to contain a University Sound 5030 transformer for 20/70.7-volt distributed systems. Transformer purchased separately.

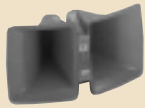


System Examples

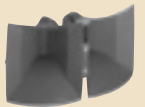
EVID™ Systems

30-watt driver for reentrant horns ID30CT

Compatible Horns



Cobreflex IIB



Cobreflex III

A 30-watt heavy-duty driver for reentrant horns. Designed for use in applications that require continuous, high-level acoustic output such as high-level public address. Features rugged, weather-resistant phenolic diaphragms, indoor/outdoor packaging, 1-inch screw-on exit and a 25/70.7-volt transformer with 1.25-, 2.5-, 5-, 10-, 15- and 30-watt taps.

ID30C-16 Same as ID30CT except without transformer, 16-ohm impedance.

ID30C-8 Same as ID30CT except without transformer, 8-ohm impedance.

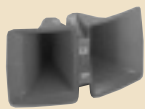


Surface Mount Speakers

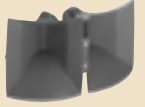
Ceiling Speakers

60-watt driver for reentrant horns ID60DT

Compatible Horns



Cobreflex IIB



Cobreflex III

A 60-watt heavy-duty driver for reentrant horns. Designed for use in applications that require continuous, high-level acoustic output such as high-level public address. Features rugged, weather-resistant phenolic diaphragms, indoor/outdoor packaging, 1-inch screw-on exit and a 25/70.7-volt transformer with 1.88-, 3.75-, 7.5-, 15-, 30- and 60-watt taps.



Horns and Drivers

Amplifiers

Specifications	7110XC	ID30 Series	ID60DT
Power Handling (500 Hz-5 kHz) pink noise	30 watts	30 watts	60 watts
Frequency Response	500 Hz-4 kHz, ±5 dB	500 Hz-4 kHz, ±5 dB	500 Hz-4 kHz, ±5 dB
Sensitivity (1 W, 1 m 500 Hz-5 kHz pink noise, Cobreflex III horn)	100 dB SPL	106 dB SPL	107 dB SPL
Nominal Impedance	8 ohms (on CF III)	8 ohms (ID30C-8) 16 ohms (ID30C-16) 25/70.7 CV (ID30CT)	8 ohms (ID60D-8) 25/70.7 CV (ID60DT)
Dimensions, in. (cm)	7.9 dia. x 7.4 D (20.1 dia. x 18.8 D)	4.2 dia. x 5.2 depth (10.7 dia. x 13.2 depth)	5.6 dia. x 6.4 depth (14.2 dia. x 16.3 depth)
Net Weight	12 lb. (5.4 kg)	3.5 lb. (1.6 kg) ID30CT: 4.5 lb. (2.0 kg)	5.9 lb. (2.7 kg) ID60CT: 7.4 lb. (3.4 kg)

Paging Mics

ProAnnounce™

MA-1212 12-input mixer/amplifier 120-watt output



The MA-1200 series of professional rack mount mixer/amplifiers are designed for larger BGM/paging and public address system installations where expandability and flexibility is the ticket. These new units are exceptional values, loaded with features and are easy to install in a variety of system designs. The MA-1212 provides a powerful 120 watts of output power into 70v/100v or 4/8 ohm loads. The units feature 12 separate input channels for maximum flexibility in large installations.

MA-1206 Same as the MA-1212 but features 60 watts of amplifier power.

MA-606 6-input mixer/amplifier 60-watt output



The MA-606 is a versatile 60-watt mixer/amplifier suited for a variety of small and medium sized installations where up to sources are being used. It features 2 phono plug type stereo summing inputs and 4 mic/line switchable balanced inputs. It also has a fixed or adjustable balanced line level output for adding auxiliary devices or additional power amplifiers. The telephone paging input with priority override adds versatility for paging applications. Its 60-watt power amplifier can drive either low impedance or 70v/100v speaker loads.

1407A Power amplifier



A 75-watt output power amplifier. Ideal for general-purpose applications in clubs, convention centers, meeting halls, etc. Accommodates four input types: 5-lug screw terminal, male or female XLR and phono connector. Amplifiers include a bridging transformer, 300 Hz switchable high pass filter and 15 dB switchable input pad. Two auxiliary unbalanced outputs are also provided: pre-fader and post-fader from the master output level control. Includes an 8-ohm direct output and balanced outputs including 4 ohm, 25-volts and 70.7-volts. The amplifiers are fully protected from short circuited loads, overheating and excessive load reactance. Also protected from loads from turn-on/turn-off transients, subsonic signals and DC offsets.

1415A Same as 1407A except with 150-watt continuous average output power.

Specifications	MA-1212	MA-1206	MA-606
Power Output @ 1kHz	120 watts	60 watts	60 watts
Frequency Response	50 Hz-15 kHz, ±3 dB	50 Hz-15 kHz, ±3 dB	50 Hz-15 kHz, ±2 dB
Input Sensitivity/Impedance			
Mic Setting	0.3 mV/600 ohm (balanced)	0.3 mV/600 ohm (balanced)	0.3 mV/600 ohm (balanced)
Line Setting	75 mV/47 kohm (balanced)	75 mV/47 kohm (balanced)	75 mV/47 kohm (balanced)
Paging	-20 dBm/600 ohm (transformer isolated)	-20 dBm/600 ohm (transformer isolated)	-20 dBm/600 ohm (transformer isolated)
Power Amp In	1 V/10 kohm (unbalanced)	1 V/10 kohm (unbalanced)	1 V/10 kohm (unbalanced)
Auxiliary	100 mV to 1V/ (unbalanced)	100 mV to 1V/ (unbalanced)	100 mV to 1V/ (unbalanced)
THD (at Rated Output)	<1% @ 1 kHz	<1% @ 1 kHz	<1% @ 1 kHz
Tone Controls,			
Bass	+10 dB @ 100 Hz	+10 dB @ 100 Hz	+10 dB @ 100 Hz
Treble	+10 dB @ 10 Hz	+10 dB @ 10 Hz	+10 dB @ 10 Hz
Muting	40 dB attenuation	40 dB attenuation	40 dB attenuation
Power Dissipation	390 watts	250 watts	220 watts
Power Supply	108-132 V ac, 50/60 Hz	108-132 V ac, 50/60 Hz	108-132 V ac, 50/60 Hz
Dimensions			
Height	5.2 in. (13.3 cm)	5.2 in. (13.3 cm)	5.2 in. (13.3 cm)
Width	18.9 in. (48.0 cm)	18.9 in. (48.0 cm)	18.9 in. (48.0 cm)
Depth	12.6 in. (32.0 cm)	12.6 in. (32.0 cm)	12.6 in. (32.0 cm)
Net Weight	25.4 lb (11.5 kg)	19.9 lb (9 kg)	19.0 lb (8.5 kg)

Specifications	1407A	1415A
Frequency Response	Ref 1 kHz at 1 watt output power	Ref 1 kHz at 1 watt output power
Direct Output, ±1 dB ±3 dB	20 Hz-20 kHz 10 Hz-30 kHz	20 Hz-20 kHz 10 Hz-30 kHz
THD	0.01% (Ref 1 kHz)	0.01% (Ref 1 kHz)
Power Bandwidth	(±3 dB Ref. 1 kHz at rated output power)	(±3 dB Ref. 1 kHz at rated output power)
Transformer Output	50 Hz-15 kHz (Any output tap)	50 Hz-15 kHz (Any output tap)
Dimensions		
Height	5.25 in. (13.3 cm)	5.25 in. (13.3 cm)
Width	19.0 in. (48.3 cm)	19.0 in. (48.3 cm)
Depth	12.5 in. (31.8 cm)	12.5 in. (31.8 cm)
Weight	24.2 lb. (11.0 kg)	30.8 lb. (14.0 kg)
Damping Factor	>50	>50
Signal-to-Noise Ratio	>100 dB	>100 dB
Transformer Output (Any Output Tap) ±1 dB	20 Hz-16 kHz	20 Hz-16 kHz
Transformer Output (Any Output Tap)	95 watts	190 watts
Direct Output	20 Hz-20 kHz	20 Hz-20 kHz
Continuous Average Output Power (Direct or Transformer Output)	75 watts	150 watts
Maximum Midband Output Power (Ref. 1 kHz, 1% THD) Direct Output	100 watts	200 watts

To order or for more information call 1-800-685-6386

Power amplifier **CPS1**

All Electro-Voice CPS amplifiers are made to meet the highest requirements of any demanding application. The mechanical construction follows the highest precision standards of the industry. The extensive 5-way protection system features comparator circuitry which constantly monitors the input and output signals and activates the internal limiters whenever a non-linear operational state is encountered. This provides reliable protection of the connected loudspeaker systems against overload and clipping. This exclusive protection system provides on-board protection against thermal and capacitive overload, short-circuit and the occurrence of HF or DC at the output. Additionally, special circuitry prevents the output-stage transistors from being damaged by Back-EMF. During soft start, delayed switching of the power outputs is accomplished via relays and a limiter controls the initial current inrush, preventing the mains fuse from being blown during the power-on operation.

The electronically balanced inputs are provided via XLR-type and Phoenix connectors which are also used to loop the signal through. Using the Input Routing-switches lets you determine if the amplifiers are operated in stereo or monaural mode; "monobridged" operation is also possible. The dB-scaled level controls are to be found on the rear panel. These potentiometers guarantee precise and reliable operation. In normal operation all CPS power amplifiers can be used to drive loads down to 2 ohms; in bridged mode the minimal load is 4 ohms. All amps are equipped with extremely silent running fans providing front-to-rear air circulation, guaranteeing trouble-free operation even in smaller power amplifier rack systems.

CPS2 The CPS2 incorporates all the advanced features of the CPS1 but can deliver up to 600 watts of power at 1kHz into 4 ohms.

CPS2t The CPS2t offers all the performance of the CPS2 and adds the capability of 70v/100v constant voltage operation. It also features Transformer Saturation Protection (TSP) that monitors the current demands of the 70v/100v matching transformer and can protect against overload and distortion.



Power amplifier output **Transformers**

4/8-ohm primary load, 70.7/100-volt secondary load, 0.5 dB insertion loss.

- 15060** 60-watt
- 15075** 75-watt
- 15150** 150-watt
- 15200** 200-watt
- 15300** 300-watt
- 15470A** 400-watt
- 15600** 600-watt

Specifications		CPS1	CPS2	CPS2t
Maximum Power (<1% THD, 1 kHz both channels driven)	2 ohms	650 watts	850 watts	850 watts
	4 ohms	450 watts	600 watts	600 watts
	8 ohms	280 watts	380 watts	380 watts
Rated Power (<0.2% THD, 20 to 20,000 Hz both channels driven)	2 ohms	450 watts	650 watts	650 watts
	4 ohms	350 watts	500 watts	500 watts
	8 ohms	230 watts	300 watts	300 watts
Maximum Bridged Output (<1% THD, 1 kHz)	4 ohms	1300 watts	1700 watts	1700 watts
	8 ohms	900 watts	1200 watts	1200 watts
Slew Rate		25 V/ms	30 V/ms	30 V/ms
Total Harmonic Distortion		<0.05%	<0.05%	<0.05%
Intermodulation Distortion		<0.08%	<0.08%	<0.08%
Crosstalk (at 1 kHz)		<-80 dB	<-80 dB	<-80 dB
Input Impedance (Balanced)		20 k ohms	20 k ohms	20 k ohms
Signal to Noise Ratio (dB-A Weighted)		>105 dB	>105 dB	>105 dB
Dimensions				
Height		5.2 in. (133 mm)	5.2 in. (133 mm)	5.2 in. (133 mm)
Width		19.0 in. (483 mm)	19.0 in. (483 mm)	19.0 in. (483 mm)
Depth		15.2 in. (386 mm)	15.2 in. (386 mm)	15.2 in. (386 mm)
Weight		33.1 in. (15.0 kg)	35.3 in. (16.0 kg)	49.6 in. (22.5 kg)

Power requirements: 120v, 50 Hz - 60 Hz, factory configured.
Protection: Audio limiters, high temperature, DC, HF, Back-EMF, Peak current limiters, Inrush current limiters, turn-on delay.
Cooling: Front-to-rear, 3-stage-fans.
Note: Amplifier at rated conditions, both channels driven, 8 ohms load, unless otherwise specified.

253

Single-zone desktop paging mic



A low-impedance single-zone paging desk microphone. Microphone housing is constructed of strong, one-piece, die-cast zinc alloy with gray powder coat finish. 253 is equipped with a 4-conductor, 2-shield cable to allow for external relay operation. Also equipped with a front press-to-talk bar with a locking bar lever on the side of the base. Rugged yet sensitive, the 253 should be used with amplifiers that have input impedance of 50 to 250 ohms.

US622L

Single-zone desktop paging mic



A dynamic, low-impedance balanced-output microphone. Designed for general communication and paging application use. Stand alone for desktop use or may be configured for hand-held operation. Noise canceling design, provides base-mounted push-to-talk operation.

US600EL

PTT hand mic



A hand microphone designed for maximum noise rejection in high ambient areas and effective use without "close talking" techniques. An excellent choice for critical communication applications, US600EL is built to withstand rough usage and atmospheric extremes.

US602FL A hand microphone featuring clear speech transmission in high ambient noise level environments, convenient grip-to-talk activation and noise canceling dynamic design. Perfect for police, marine and mobile paging applications.

MP756

11-zone desktop paging mic



An 11-zone all-call microphone. MP756 features an all-call switch for simultaneous activation of all paging zones and a paging indicator lamp.

MP753 A 3-zone all-call microphone. MP753 features an all-call switch for simultaneous activation of all paging zones and a paging indicator lamp.



Specifications	253	US622L	US600EL/FL	MP756/753
Generating Element	Dynamic	Dynamic	Dynamic	Dynamic
Frequency Response	60 Hz-10 kHz	100 Hz-9 kHz	100 Hz-7 kHz	60 Hz-10 kHz
Polar Pattern	Omnidirectional	Noise canceling	EL: Omnidirectional	Omnidirectional FL: Noise canceling
Impedance	150 ohms	150 ohms	150 ohms	200 ohms
Output Level	-59 dB	-57 dB	-55 dB	-58 dB
Switch	Single zone	Shorts or opens in "off" mode	Shorted in "off" mode	11 zone and all call
Dimensions, in.	7.75 H x 4 W x 5.5 D	9.7 H x 4.5 W x 4.8 D	3.9 H x 2.7 W x 1.8 D	9 H x 4 W x 6 D
Net Weight	2 lb. (0.9 kg)	1 lb., 13 oz. (822g)	10 oz. (283.5 g)	2 lb. (0.9 kg) including cable

System Examples
EVID™ Systems
Surface Mount Speakers
Ceiling Speakers
Horns and Drivers
Amplifiers
Paging Mics
ProAnnounce™

Gooseneck mic US690

A 12-inch flexible gooseneck microphone. Features N/DYM® magnet structures that provide up to 6 dB more sensitivity than conventional designs. A dynamic cardioid, the US690 terminates with an XLR-type connector and plug-in mount.



Single-zone gooseneck mic SR785LN/O

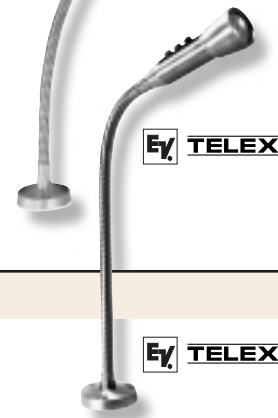
A low-impedance, gooseneck microphone for single-zone paging. Designed for applications where ruggedness, dependability and durability are the main requirements. Microphone housing is constructed of die-cast zinc alloy to stand up to the toughest abuse and conditions. Features a recessed aluminum grille with windscreen and a durable satin-chrome finish. All units include a heavy-duty, 3-hole mounting flange and an extra-strength 16-inch flex arm of steel tubing. SR785LN/O includes a push-button switch with normally "open" switching.



SR785L Same as SR785LN/O except without normally "open" switching.

3-zone gooseneck mic MP785

A 3-zone omnidirectional gooseneck paging microphone. Any or all zones may be called by depressing the appropriate, color-coded buttons. Three mounting screws are supplied with the microphone. Features a durable satin-chrome finish, die-cast aluminum alloy housing, steel flex arm and aluminum mounting base.



PTT noise canceling hand mic NC450D

A dynamic paging hand microphone. NC450D's noise-canceling design makes it particularly effective for use in noisy locations and excellent voice response characteristics make it a good choice in quiet areas as well. Output impedance is 200 ohms for matching low impedance input circuits. A push-to-talk switch is located on the molded ABS microphone housing. A soft rubber lip guard assures user of correct microphone-to-mouth positioning.



450D Same as NC450D except without noise-cancellation. Molded Cyclocac® housing in pebble-grain black finish and unterminated black neoprene coil cord relieved at the housing by spring-type strain relief.

Wall plate mic WP300S

A dynamic, omnidirectional wall plate microphone. Ideal for security monitoring, fast-food and retail outlets, warehouses and public usage applications. WP-300S mounts on standard electrical, single-gang wall boxes. The housing of each unit is an aluminum assembly on a steel outlet plate with a brushed, satin-chrome finish. The assembly is complete with rubber shock mount. Includes a double-pole, double-throw switch for push-to-talk and line shorting capabilities.



WP300 Same as WP-300S except without double-pole, double-throw switch.

Specifications	US690	SR785LN/O	MP785	450D/NC450D	WP300/300S
Generating Element	Dynamic	Dynamic	Dynamic	Dynamic	Dynamic
Frequency Response	60 Hz-20 kHz	100 Hz-10 kHz	100 Hz-10 kHz	100 Hz-8 kHz	100 Hz-10 kHz
Polar Pattern	Supercardioid	Omnidirectional	Omnidirectional	Omnidirectional (450D) Noise canceling (NC450D)	Omnidirectional
Impedance	150 ohms	150 ohms	150 ohms	200 ohms	150 ohms
Output Level	-50 dB	-58 dB	-58 dB	-64 dB	-60 dB
Switch	N/A	Single zone normally open (SR785LN/O) normally shorted (SR785L)	3 zone	PTT	PTT (WP300S only)
Dimensions, in.	2 dia x 16.6 long	Gooseneck 16 Body 5.25 x 1.825	Gooseneck 16 Body 5.25 x 1.825	2.5 H x 3 W x 4 D	4.5 H x 2.75 W x 1.125 D
Net Weight	1 lb., 1.8 oz. (505 g)	14 oz. (397 g)	1.7 lb. (0.77 kg)	9 oz. (225 g)	WP300: 3 oz. (85 g) WP300S: 3.5 oz. (99 g)

System Examples

EVID™ Systems

Surface Mount Speakers

Ceiling Speakers

Horns and Drivers

Amplifiers

Paging Mics

ProAnnounce™

System Examples

EVID™ Systems

Surface Mount Speakers

Ceiling Speakers

Horns and Drivers

Amplifiers

Paging Mics

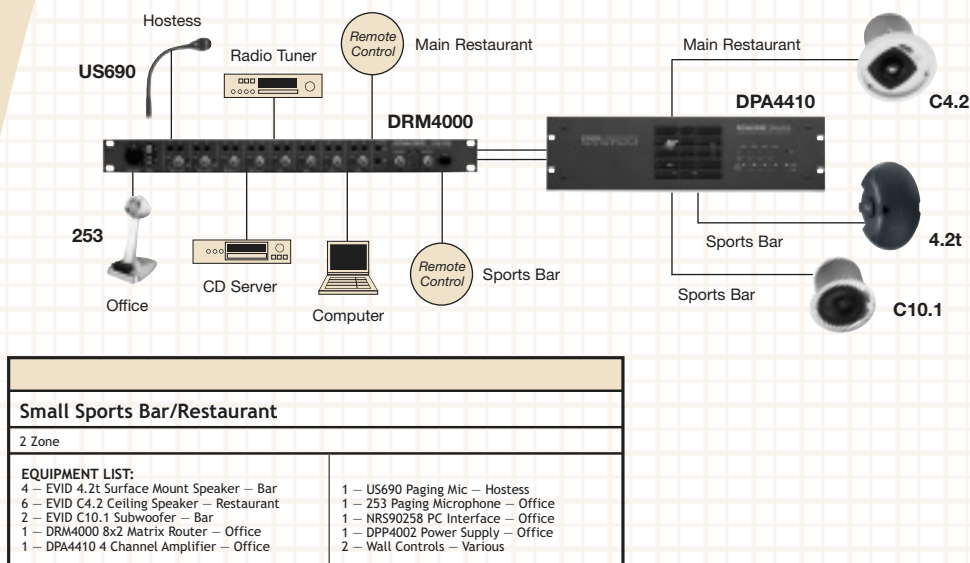
ProAnnounce™

Many commercial sound and distributed audio applications require extensive routing and control of audio signals. Installations such as restaurants with several different gathering areas may require different music programs. Warehouses and office buildings need individual zoned areas for paging and announcements during the course of daily business activities.

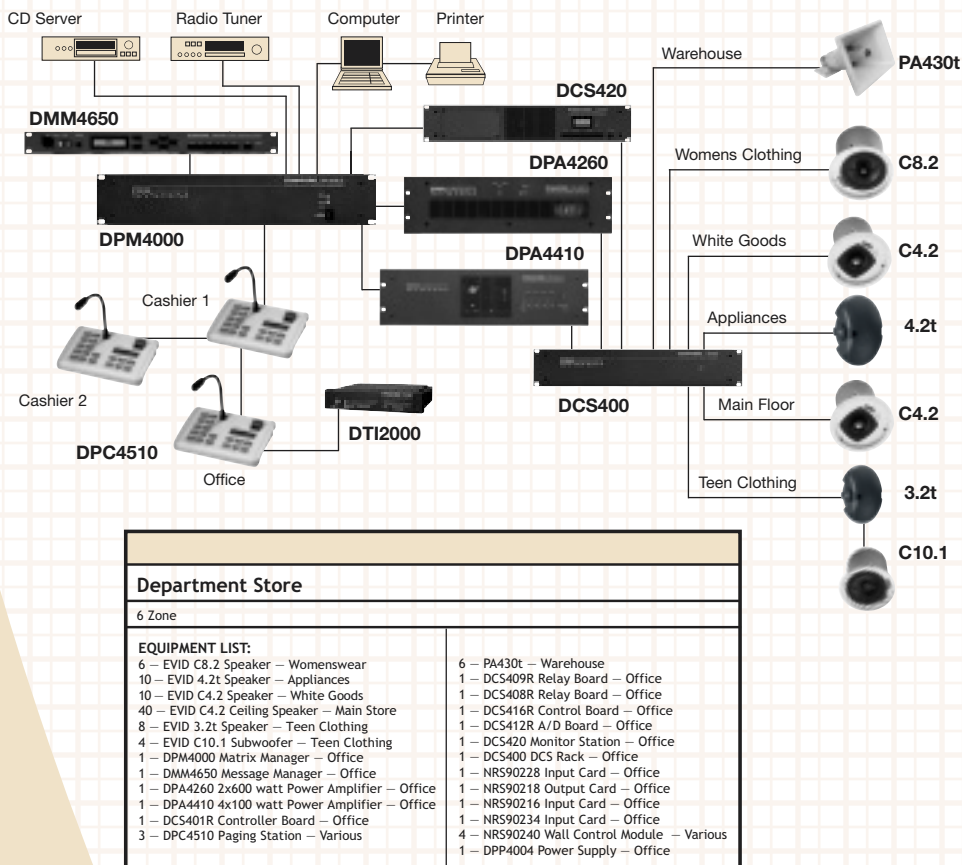
In the past, delivering a cost efficient and workable system to your customer required assembling a variety of unrelated components, many of which you never could be sure of their compatibility or reliability. In addition, since many of these components were never tested as a system, you could not be sure that full manufacturer support would be available. Now, however, one of the most successful systems in Europe manufactured by Telex/EV in Germany is available in the U.S. The Dynacord ProAnnounce™ system brings a new level of performance and installation ease to routing and paging control systems. Each component has been designed and tested to work with all featured commercial EV speakers, microphones and amplifiers.

As you will note in the installation examples, a variety of systems are possible. You can be confident that when you design and sell any paging or background music system equipped with EV/Dynacord products you will get outstanding reliability and full support for your installation. For all of your small to large background music, paging and audio control jobs, ProAnnounce™ and EV brands are the ticket!

SPORTS BAR SYSTEM EXAMPLE



DEPARTMENT STORE SYSTEM EXAMPLE



4x4 Digital matrix manager CPU DPM4000

The DPM4000 employs a digital audio matrix providing 4 inputs and 4 outputs. Additional matrix junctions for the integrated alarm signal generators, the vocal recording/playback unit, and the lock-on of the pilot tone and its evaluation are also incorporated. All input signals and internally generated signals can be freely mixed inside the matrix and routed through the 4 amplifier channels.

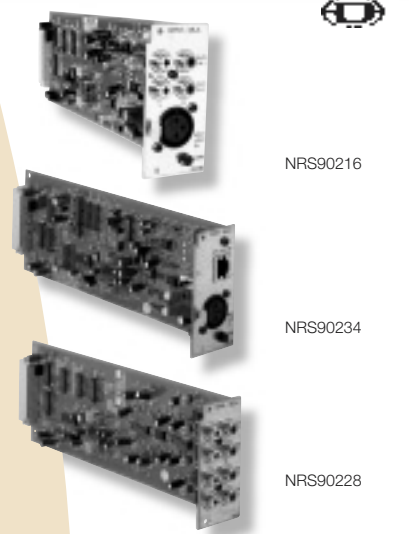
Optional features include an interactive chime/alarm generator, message stacking, prerecorded message system monitoring and measurement, delay and clock/calendar functions.

The DPM4000 is capable of managing up to 16 paging stations and up to 100 output lines. More than 150 control inputs and outputs are available for controlling and monitoring purposes providing the possibility to generate and manage logic levels and analog levels as well. Configuration and documentation of a ProAnnounce™ system installation is established through the use of the ProAnnounce™ designer software that runs on a PC under Windows 95/98/NT/2000/XP. A variety of different input modules are available to match different signal levels and physical connections.

An NRS90218 XLR line output card is included as a standard feature. Additional system options are available including a variety of input transformers and additional message memory.

Modular interface cards

NRS90215	2 Channel - RJ45 Paging Input Console
NRS90216	XLR Mic/Line + 2 RCA Aux input
NRS90217	2 Channel - XLR Mic/Line input
NRS90218	2 Channel - XLR Line output
NRS90234	XLR Mic/Line - RJ45 Paging Input Console
NRS90228	2 Channel - 4 RCA Aux input



Digital message manager DMM4650

The DMM4650 digital signal processor is packaged in a 1 RU enclosure which houses the message recorder, alarm signal and gong signal generator, and an extremely versatile sequencer. The message manager employs a flash-memory that is absolutely maintenance-free and provides the capability of direct digital recording and reproduction of at least 100 individual sound and speech signals. Depending on the installed storage capacity, the maximum recording time is 16 minutes. The user can choose between different sample rates to optimize recording quality versus recording time, based upon customer requirements. Additional options are available for the DMM4650 including input transformers and message memory expansion.



8x2 Matrix router CPU DRM4000

The DRM4000 is a compact and extremely flexible controller for a variety of routing tasks in Background Music, AV Boardroom or Paging applications. The unit can be interfaced to the DPM4000 or it can function as a stand alone CPU for smaller systems. The DRM4000 features integrated page ducking, priority control, remote audio volume operation and many other features which make the unit ideal for even complex 2 zone applications.

Modular interface cards

NRS90256	RS485 interface for connection to the DPM4000
NRS90258	RS232 PC interface – Includes configuration software for Windows 95/98/2000/XP systems.



Rack mount power supply DPP4004

The DPP4004 PA power supply rack-unit is designed to provide the supply voltage of 24 V DC (up to 4 amp capacity) for any ProAnnounce™ system. The power supply provides all the functions that modern PA systems require, including: automatic and gapless switching between primary and battery supply as well as remote ON/OFF-functions. During normal operation, the primary output is connected to the internal switch-mode power supply. In case of temporary power-loss, power-failure, or malfunctioning of the switch-mode power supply, this output is switched to battery supply almost instantaneously, providing uninterrupted power supply for all connected devices. When the mains supply is restored, the unit automatically returns with a delay of 600 ms to mains operation.



DPP4012 High Capacity Rack Mount Power Supply (12 amp capacity)

DPP4002 Line Cord Power Supply (2 amp capacity)

System Examples

EVID™ Systems

Surface Mount Speakers

Ceiling Speakers

Horns and Drivers

Amplifiers

Paging Mics

ProAnnounce™

System Examples
EVID™ Systems
Surface Mount Speakers
Ceiling Speakers
Horns and Drivers
Amplifiers
Paging Mics
ProAnnounce™

DPC4510 8 Function/10 key paging console with display



The paging stations of the ProAnnounce™ system are extremely rugged, constructed of metal, and are designed for years of trouble free operation. The “Euro-styling” provides an attractive appearance, decidedly a notch up from typical paging equipment.

All ProAnnounce™ series paging stations employ integrated microprocessors to control their internal functions and data communication with the central unit. The integrated watchdog-circuit guarantees the complete monitoring of the stations health, for truly fail-safe operation. Additional options are available for any paging station model including lockout key switches and input transformers.

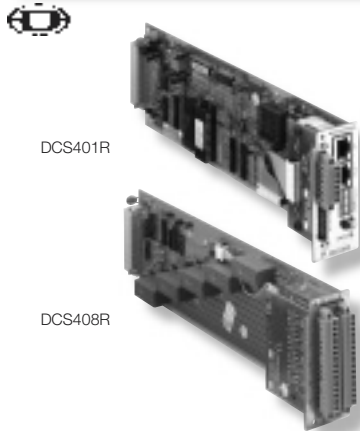
- DPC4106** 6 Function Paging Console with Display
- DPC4520** 8 Function/20 Key Paging Console with Display
- DPC4530** 8 Function/30 Key Paging Console with Display
- DPC4550** 8 Function/50 Key Paging Console with Display
- DPC4350** 50 Key Expansion Station

DTI2000 Telephone interface



The DTI2000 is a microprocessor-controlled, freely configurable telephone interface for connecting ProAnnounce™ systems to a telephone installation or the phone network. The DTI2000 allows making announcements via the speaker system installation from any telephone set. Remotely triggering signals, prerecorded text messages and control functions (macros) within the ProAnnounce™ system is also possible via phone connection.

DCS400 Digital control system expansion chassis



The ProAnnounce™ digital control system expands the capability of the ProAnnounce™ system significantly. When you add one or more DCS control cards to a ProAnnounce™ system you can greatly expand the number of additional paging zones, add digital or analog controls, enable remote switching and monitoring and many other functions.

Several types of expansion modules are available to control relays, zone switches, signal lines, system control functions, audio levels etc. Several modules can be cascaded together to provide nearly limitless system configurations.

All DCS control cards are available either as stand alone cards or as an “R” series version for mounting in the DCS400 expansion chassis.

The DCS400 is the main chassis for the DCS “R” series system modules. The unit is 2 RU in height and can accept up to 10 DCS-R type modules. The DCS expansion system provides dozens of expansion options to a ProAnnounce™ system.

DCS expansion cards

Stand Alone Version	“R” series version	
DCS401	DCS401R	Master DCS Control Module
DCS408	DCS408R	Control Relay Module – 70/100v Audio Signals
DCS409	DCS409R	Control Relay Module – Line Level Audio Signals
DCS412	DCS412R	Logic Input Module
DCS416	DCS416R	Analog I/O Interface Module

DCS420 Monitor station with speaker



The DCS420 is designed for monitoring power amplifier outputs and for pre-listening to audio signal sources in ProAnnounce™ installations. The SOURCE-key lets the user select up to 250 different monitor sources while the VOLUME-key allows setting loudspeaker or headphone volume level in 10 steps. MUTE switches the speaker or phones signal ON or OFF. The sequence of monitor signal switching can be preprogrammed in the ProAnnounce™ designer software. (The DCS420 requires a DCS401R or DCS401 Controller Interface card.)

To order or for more information call 1-800-685-6386

ProAnnounce™ amplifiers provide an unprecedented level of failure tolerance, recovery and reporting. Pilot tone monitoring of line impedance is available, as is ground fault monitoring and over temperature reporting. ProAnnounce™ amplifiers report status to the DPM4000 PA controller, which can then seamlessly switch to backup amplifiers and generate user alerts. The amplifiers are 24V ready to insure failsafe operation during power outages, and in conjunction with the DPM4000 PA programming, can go into a very low power consumption quiescent mode during battery operation, “waking up” only when required for emergency alarms and announcements.

4 x 100w 4 channel power amplifier DPA4411

The DPA4411 provides 4 x 100 watts output power. The simultaneous operation of 70V and 4Ω speaker systems is possible through its intelligent output design. This topology allows for several configurations of the four power output channels. Either 4 x 100 W, 1 x 200 W and 2 x 100 W or 2 x 200 W configurations are available. The 4411 also provides extensive system control and monitor functions which support level control, a variety of fault monitors, and signal routing. The four electronically balanced inputs are provided as XLR-type connectors (0 dBu). Also provided are routing switches, allowing input coupling. Remote-starting the power amplifier is possible when it is operated on mains supply or on 24VDC emergency power supply.



DPA4410 The same platform as the DPA4411 except it does not provide the remote control and monitoring functions.

2 x 600w 2 channel power amplifier DPA4260

The DPA4260 provides 2 x 600 watts of output power. As with the DPA4410/11 models, the simultaneous operation of 70 V and 4Ω speaker systems is possible through its intelligent output design. The two electronically balanced inputs are provided as XLR-type connectors (0 dBu). Remote-starting the power amplifier is possible when it is operated on mains supply or on 24VDC emergency power supply.



DPA4140 1 x 400w Remote Control Single Channel Amplifier
(requires input module below) The DPA4140 provides 1 x 400 watts output power. When used with the NRS90222 module below, the 4140 also provides extensive system control and monitor functions which support level control, a variety of fault monitors, and signal routing. The electronically balanced input is provided as an XLR-type connector (0 dBu). Remote-starting the power amplifier is possible when it is operated on mains supply or on 24VDC emergency power supply.



DPA4120 1 x 200w Remote Control Single Channel Amplifier
(requires input module below) The DPA4120 offers the same features as the 4140 above but with 1 x 200 watts of output power.

Input modules

- NRS90222** Remote input module for DPA4140 or 4120
- NRS90225** Standard input module for DPA4140 or 4120 (Non remote)

Specifications	DPA4411	DPA4410	DPA4260	DPA4140	DPA4120
Number of Channels	4	4	2	1	1
Maximum Power/Channel (<1% THD, 1kHz)	4 ohms: 100, 8 ohms: 50 70 v: 98	4 ohms: 100, 8 ohms: 50 70 v: 98	4 ohms: 500, 8 ohms: 250 70 v: 500	4 ohms: 400, 8 ohms: 200 70 v: 392	4 ohms: 196, 8 ohms: 98 70 v: 196
Maximum Bridged Output (<1% THD, 1kHz)	N/A	N/A	4 ohms: 1700, 8 ohms: 1200 70 v: 1160	N/A	N/A
Slew Rate	25 V/ms	25 V/ms	30 V/ms	30 V/ms	30 V/ms
Total Harmonic Distortion	<.1%	<.1%	<.05%	<.05%	<.05%
Intermodulation Distortion	<.5%	<.5%	<.08%	<.08%	<.08%
Crosstalk (@ 1 kHz)	<-80 dB	<-80 dB	<-80 dB	N/A	N/A
Input Impedance (Balanced)	10 k ohms	10 k ohms	20 k ohms	10 k ohms	10 k ohms
Signal to Noise Ratio(dB-A Weighted)	>100 dB	>100 dB	>100 dB	>100 dB	>100 dB
Dimensions, in. (mm)	5.2 H x 19.0 W x 13.6 D (132 H x 483 W x 345 D)	5.2 H x 19.0 W x 13.6 D (132 H x 483 W x 345 D)	5.2 H x 19.0 W x 15.2 D (133 H x 483 W x 386 D)	5.2 H x 19.0 W x 13.6 D (133 H x 483 W x 386 D)	5.2 H x 19.0 W x 13.6 D (133 H x 483 W x 386 D)
Net Weight	49.5 lb. (22.5 kg)	49.0 lb. (22.2 kg)	49.6 lb. (22.5 kg)	36.8 lb. (16.7 kg)	29.0 lb. (13.2 kg)

System Examples

EVID™ Systems

Surface Mount Speakers

Ceiling Speakers

Horns and Drivers

Amplifiers

Paging Mics

ProAnnounce™

Model No.	Description	Page
AB-34/AB-64	Mounting brackets	5
AB-32/AB-62	Mounting brackets	5
CDP-848AT	30-watt compound diffraction projector	12
CDP-850T	60-watt compound diffraction projector	12
CFID32-T	32-watt paging projector	12
Cobreflex® IIB	Folded sectoral horn	11
Cobreflex® III	Folded sectoral horn	11
CPS-1	Power amplifier	17
CPS-2	Power amplifier	17
CPS-2t	Power amplifier	17
DCS	Interface cards	22
DCS400	Digital control system expansion chassis	22
DCS420	Monitor station with speaker	22
DMM4650	Digital message manager	21
DPA4411	4 x 100w 4 channel power amplifier	23
DPA4410	4 x 100w 4 channel power amplifier	23
DPA4260	2 x 600w 2 channel power amplifier	23
DPA4140	1 x 400w remote control single channel amplifier	23
DPA4120	1 x 200w remote control single channel amplifier	23
DPC4510	8 function/10 key paging console	22
DPC4106	6 function paging console	22
DPC4520	8 function/20 key paging console	22
DPC4530	8 function/30 key paging console	22
DPC4550	8 function/50 key paging console	22
DPC4350	50 key expansion station	22
DPM4000	4x4 digital matrix manager CPU	21
DPP4002	Rack mount power supply	21
DPP4004	Rack mount power supply	21
DPP4012	Rack mount power supply	21
DRM4000	8x2 matrix router CPU	21
DTI2000	Telephone interface	22
EVID C4.2	Compact ceiling speaker	6
EVID C8.2	High performance ceiling speaker	6
EVID C8.2HC	"High" ceiling speaker system	6
EVID C10.1	Ceiling Subwoofer	6
EVID-6.2	Extended-range high output speaker system	4
EVID-6.2t	Extended-range high output speaker system	4
EVID-4.2	Full-range multi-use speaker system	4
EVID-4.2t	Full-range multi-use speaker system	4
EVID-3.2	Full-range speaker system	4
EVID-3.2t	Full-range speaker system	4
EVID-12.1	Dual input subwoofer	5
EVID-12.1P	Dual input subwoofer/300w amp	5
FC100	Compound diffraction projector	11
HS-3	Horizontal EVID tabletop stand	5
IBC8	30-watt reentrant paging projector/talkback speaker	12
ID30C-16	30-watt driver for reentrant horns	15
ID30C-8	30-watt driver for reentrant horns	15
ID30CT	30-watt driver for reentrant horns	15
ID60DT	60-watt driver for reentrant horns	15
MA-1212	12-input mixer/amplifier 120-watt output	16

Model No.	Description	Page
MA-1206	12-input mixer/amplifier 60-watt output	16
MA-606	6-input mixer/amplifier 60-watt output	16
MIS8C	10-watt paging/talkback projector	13
MM2	25-watt submergence proof speakers	12
MM2F	25-watt submergence proof speakers	12
MM2TC	25-watt submergence proof speakers	12
MP753	11 zone all call mic	18
MP756	11 zone all call mic	18
MP785	3-zone gooseneck mic	19
NC450D	PTT noise canceling hand mic	19
NRS series	Interface cards	21
PA430	30-watt constant-directivity paging projector	13
PA430T	30-watt constant-directivity paging projector	13
PA60	60-watt reentrant paging projector	13
PRO-8A	8-inch 30-watt two-way speaker	8
PRO-8AT30	8-inch 30-watt two-way speaker	8
PRO-8AT5	8-inch 5-watt two-way speaker	8
RPK-42	Rough-in mounting system	10
RPK-82	Rough-in mounting system	10
RPK-810	Rough-in mounting system	10
RR-42	Rough-in mounting plate	10
RR-82	Rough-in mounting plate	10
RR-810	Rough-in mounting plate	10
S-40B	5.25-inch 160-watt two-way system	7
S-40MBB	5.25-inch 160-watt two-way system mounting hardware	7
S-40MBW	5.25-inch 160-watt two-way system mounting hardware	7
S-40TB	5.25-inch 160-watt two-way system	7
S-40TW	5.25-inch 160-watt two-way system	7
S-40W	5.25-inch 160-watt two-way system	7
SR785LN/O	Single-zone gooseneck mic	19
SR785L	Single-zone gooseneck mic	19
SX-80B	8-inch 175-watt two-way constant-directivity system	7
SX-80MBB	8-inch 175-watt two-way constant-directivity system mounting hardware	7
SX-80MBW	8-inch 175-watt two-way constant-directivity system mounting hardware	7
SX-80PI	8-inch 175-watt two-way constant-directivity system	7
SX-80PIX	8-inch 175-watt two-way constant-directivity system	7
SX-80TB	8-inch 175-watt two-way constant-directivity system	7
SX-80TW	8-inch 175-watt two-way constant-directivity system	7
SX-80W	8-inch 175-watt two-way constant-directivity system	7
TC Series	EVID terminal covers	5
US600EL	PTT hand mic	18
US602FL	PTT hand mic	18
US622L	Single-zone desktop paging mic	18

Model No.	Description	Page
US690	Gooseneck microphone	19
UW30	30-watt underwater speaker	13
VS Series	Vertical EVID tabletop stand	5
WP300	Wall plate mic	19
WP300S	Wall plate mic	19
1407A	75-watt power amplifier	16
1415A	150-watt power amplifier	16
15060	60-watt power amplifier output transformer	17
15075	75-watt power amplifier output transformer	17
15150	150-watt power amplifier output transformer	17
15200	200-watt power amplifier output transformer	17
15300	300-watt power amplifier output transformer	17
15470A	400-watt power amplifier output transformer	17
15600	600-watt power amplifier output transformer	17
15704	4-watt speaker transformers	10
15708	8-watt speaker transformers	10
15716	16-watt speaker transformers	10
15732	32-watt speaker transformers	10
1828C	30-watt driver for compound diffraction projector	14
1828T	30-watt driver for compound diffraction projector	14
1829BT	60-watt driver for compound diffraction projector	14
205-4T	4-inch 4-watt full-range speaker	8
205-8A	4-inch 10-watt full-range speaker	8
205-8T	4-inch 8-watt full-range speaker	8
209-4T	8-inch 4-watt full-range ceiling speaker	9
209-4TWB	8-inch 4-watt full-range ceiling speaker with grille	9
209-8A	8-inch 10-watt full-range ceiling speaker	9
253	Single-zone paging mic	18
309-4T	8-inch 4-watt ceiling speaker	9
309-4TWB	8-inch 4-watt ceiling speaker with grille	9
309-8T	8-inch 8-watt ceiling speaker	9
309-8TWB	8-inch 8-watt ceiling speaker with grille	9
309-8A	8-inch 16-watt ceiling speaker	9
405-4T	4-inch compact 4-watt full-range high performance speaker	8
405-8H	4-inch compact 8-watt full-range high performance speaker	8
409-16T	8-inch 16-watt premium speaker	9
409-32T	8-inch 32-watt premium speaker	9
409-8E	8-inch 32-watt premium speaker	9
409-8T	8-inch 8-watt premium speaker	9
5184-E	Round back enclosure	10
5184-N	Round back enclosure	10
5195-X	Round back enclosure	10
5281-W	Round grille	10
5295-W	Grille assembly	10
7110XC	30-watt explosion proof driver	15



Step Up To Electro-Voice®

AMERICA:

USA: Telex Communications Inc. 12000 Portland Ave South, Burnsville, MN 55337, USA, Phone: 952-884-4051, Fax: 952-884-0043
Western Canada: PAG Canada. 23 Hawkesbury Crescent, Winnipeg, MB R3P-1Y6, Canada, Phone: 888-850-8811, Fax: 204-489-7614
Eastern Canada: PAG Canada. 728 Eglinton Ave. East, Toronto, ON M4G 2K7, Canada, Phone: 800-881-1685, 416-431-4975, Fax: 416-431-4588
Québec: Acoustik GE Inc. 5715 Kincourt, Montréal, PQ H4W 1Y7, Canada, Phone: 866-369-2864, 514-369-2864, Fax: 514-487-9525
Mexico: Telex Communications de Mexico. Parque Chapultepec 66-201, Naucalpan, Edo. Mex. 53390, Mexico, Phone: +52 555 358-5434, Fax: +52 555 358-5588
Latin America: Telex Communications Inc. 12000 Portland Ave South, Burnsville, MN 55337, USA, Phone: 952-887-7491, Fax: 952-887-9212

EUROPE:

Germany: Telex EVI Audio GmbH. Hirschberger Ring 45, D 94315, Straubing, Germany, Phone: +49 9421-706 0, Fax: +49 9421-706 265
France: EVI Audio France S.A. Parc de Courcerin, Allée Lech Walesa, F 77185 Lognes, France, Phone: +33 1-6480-0090, Fax: +33 1-6006-5103
UK: Telex Communications Ltd. 4, The Willows Centre, Willow Lane, Mitcham, Surrey CR4 4NX, UK, Phone: +44 208 646 7114, Fax: +44 208 640 7583
Africa & Middle-East: Telex EVI Audio GmbH. Hirschberger Ring 45, D 94315, Straubing, Germany, Phone: +49 9421-706 0, Fax: +49 9421-706 265

ASIA & PACIFIC RIM:

Japan: EVI Audio Japan Ltd. 5-3-8 Funabashi, Setagaya-Ku, Tokyo, Japan 156-0055, Phone: +81 3-5316-5020, Fax: +81 3-5316-5031
Australia: EVI Audio (Aust) Pty Ltd. Slough Business Estate, Unit 23, Silverwater, N.S.W. 2128, Australia, Phone: +61 2-9648-3455, Fax: +61 2-9648-5585
China: EVI Audio (HK) Ltd. Unit E & F, 21F, Luk Hop Industrial Bldg., 8 Luk Hop St., San PO Kong, Kowloon, Phone: +852 2351-3628, Fax: +852 2351-3329
Singapore: Telex Pte. Ltd. 3015A Ubi Road 1, 05-10 Kampong Ubi Industrial Estate, Singapore 408705, Phone: +65 746-8760, Fax: +65 746-1206

www.electrovoice.com • www.telex.com

© 2003 Telex Communications, Inc. 02/2003 PA 20532-2

All trademarks are the property of their respective owners.

All specifications subject to change without notice.